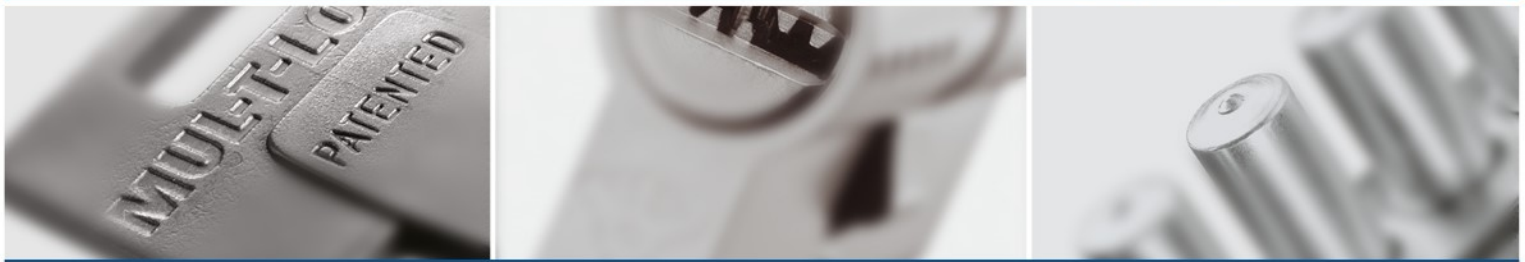


# PRODUCT UPDATE

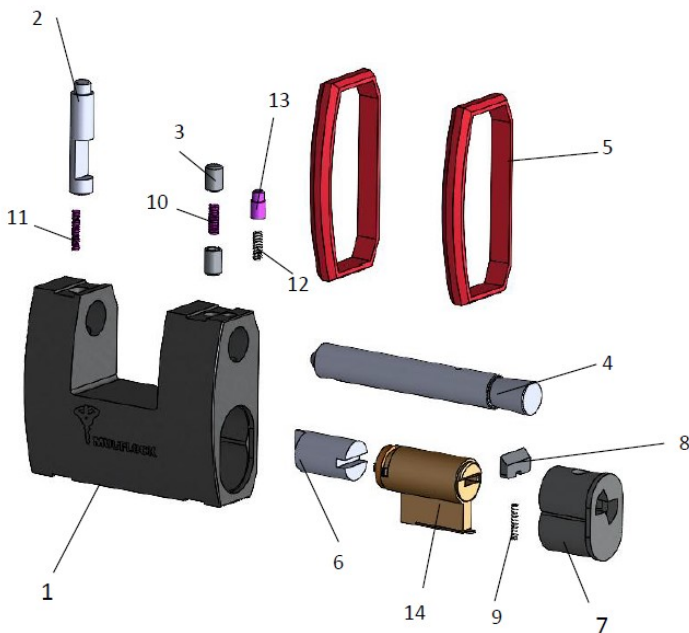


**No. No. 299**

**Date: 24/01/2022**

## Servicing Padlock SBNE12 Chicago

We would like to present the optimal way of servicing the padlock SBNE12 Chicago. Please pay close attention to the notes and instructions which are red highlighted in the presentation below.



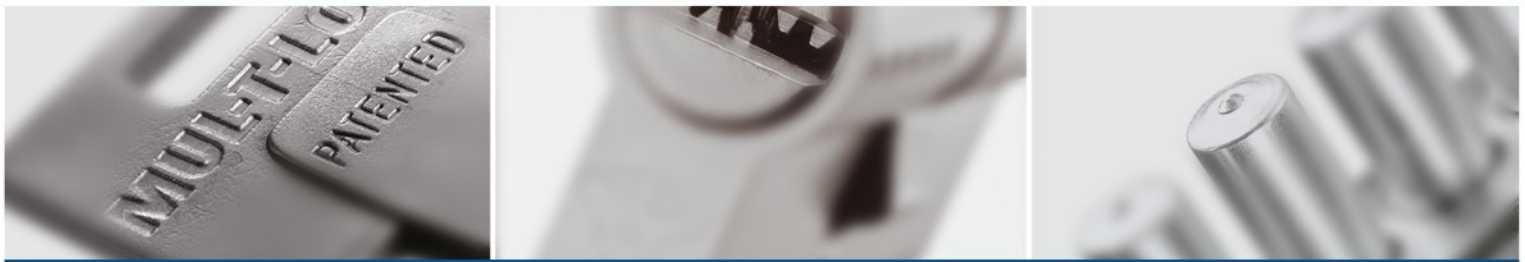
1	Lock Body	28500251
2	Latch	28500256
3	Bolt pin	28500217
4	Bolt	28500252
5	Bumper	28500164
6	Actuator	28500203
7	Cylinder Holder	28500146
8	Shutter	28500144
9	Shutter spring	28200150
10	Pin spring	28500208
11	Latch spring	28500207
12	Stopper spring	28500209
13	Bolt stopper	28500257
14	Cylinder	



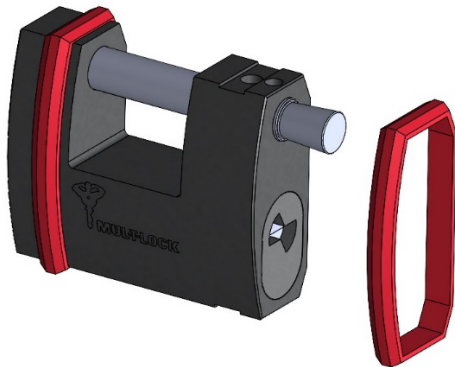
**Mul-T-Lock Technologies Ltd., Technical Support Department**  
 Tel: 972-8-9424318 | Fax: 972-8-9424418 | [tech.support@mul-t-lock.com](mailto:tech.support@mul-t-lock.com)

Part of ASSA ABLOY

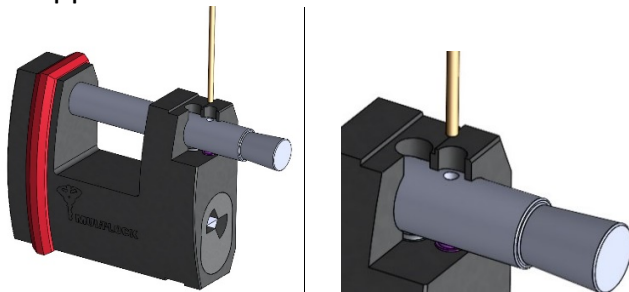
# PRODUCT UPDATE



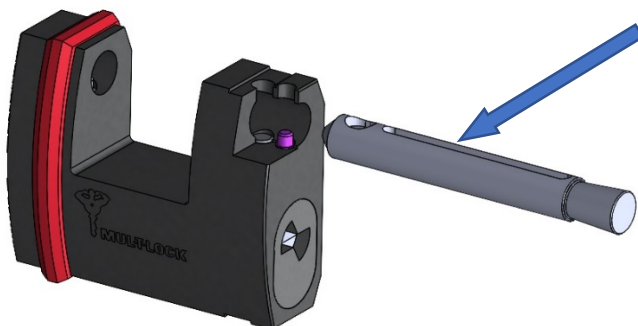
- Remove the front bumper.



- Unlock the padlock with the key. Pull the bolt out until the Service holes in the lock and the bolt stopper are aligned and visible. Through these holes, use a 2mm pin to press the bolt stopper which is located inside the lock body until the bolt can be rotated.



- rotate the bolt 180° and pull it completely out of the lock.



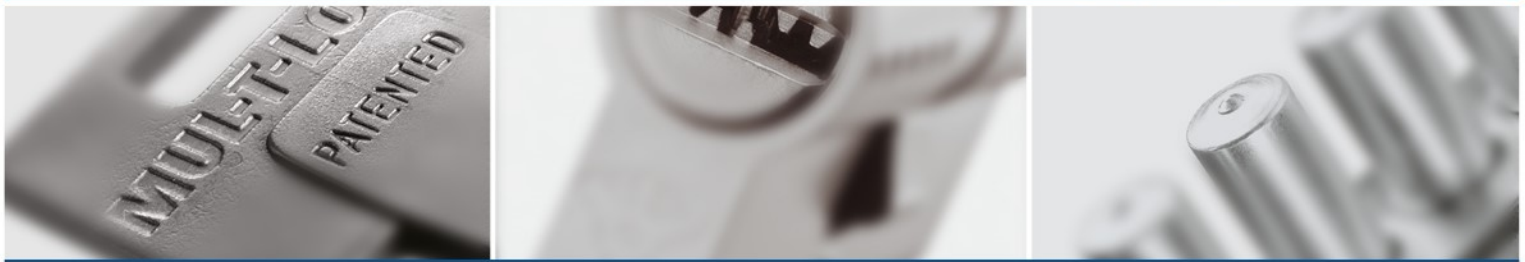
**Important note:**  
In order to prevent blocking of the locking pin, the long groove on the locking pin should face UP, until the locking pin is completely out.



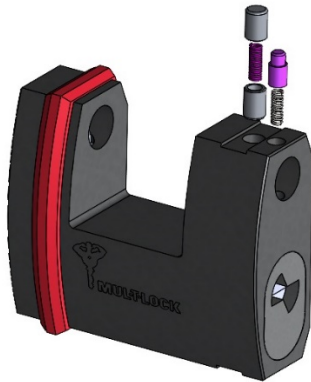
Mul-T-Lock Technologies Ltd., Technical Support Department  
Tel: 972-8-9424318 | Fax: 972-8-9424418 | [tech.support@mul-t-lock.com](mailto:tech.support@mul-t-lock.com)

Part of ASSA ABLOY

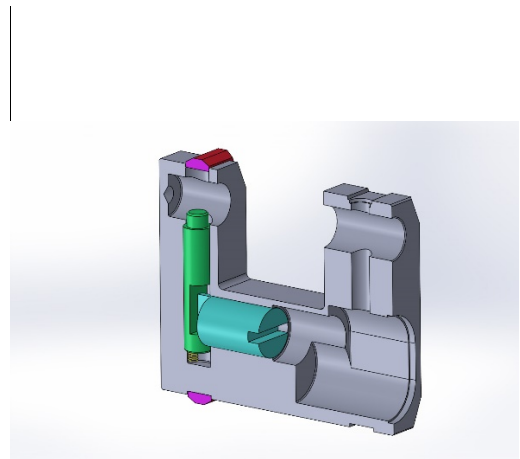
# PRODUCT UPDATE



- Take out the bolt pins, springs, and the bolt stopper.



- Pull out the cylinder together with the cylinder holder, leaving the latch, spring and actuator inside.



- For assembly, perform the same stages but in a reverse order.

**Again, pay attention to the direction of the long groove, also during the assembly process.**



Mul-T-Lock Technologies Ltd., Technical Support Department  
Tel: 972-8-9424318 | Fax: 972-8-9424418 | [tech.support@mul-t-lock.com](mailto:tech.support@mul-t-lock.com)

Part of ASSA ABLOY