

**No. 275**

**Date: 27.05.2019**

## **New Version of MasterPiece Software 5.19**

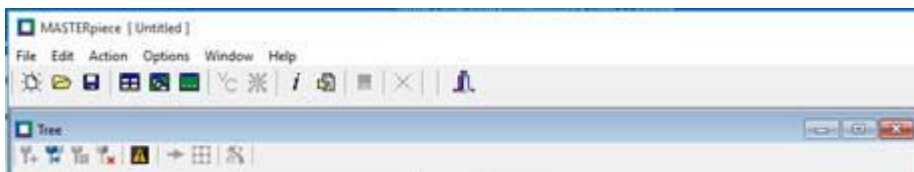
2019 is just the right time to update and enhance our high-performing, high-security master keying software.

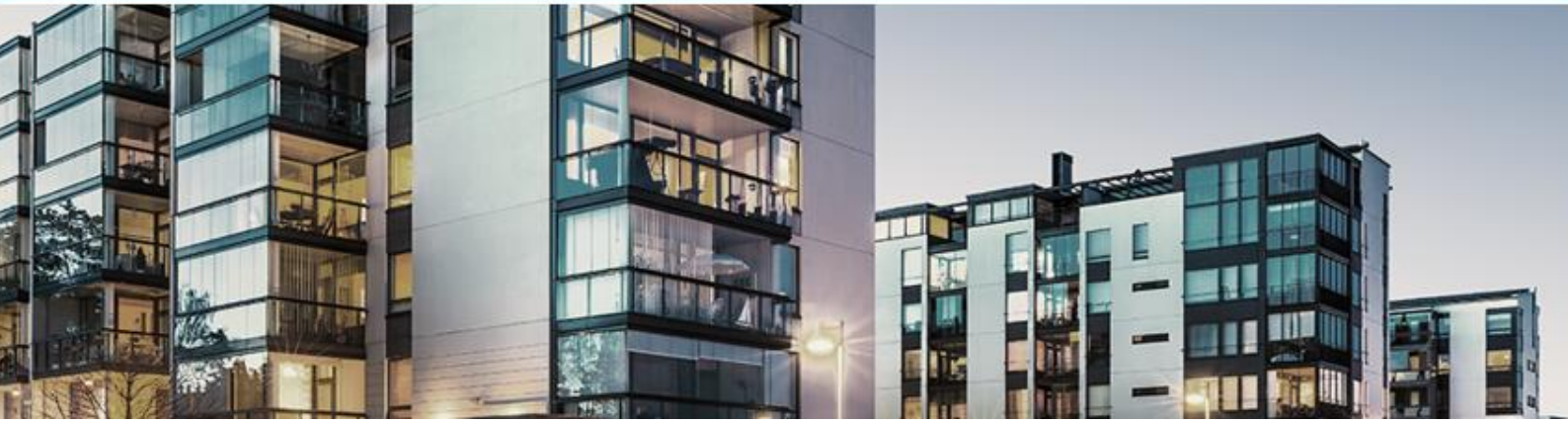
Introducing MasterPiece 5.19:



**How version 5.19 is new and improved version of MasterPiece software?**

1. New logo, new icons, and a welcome screen.

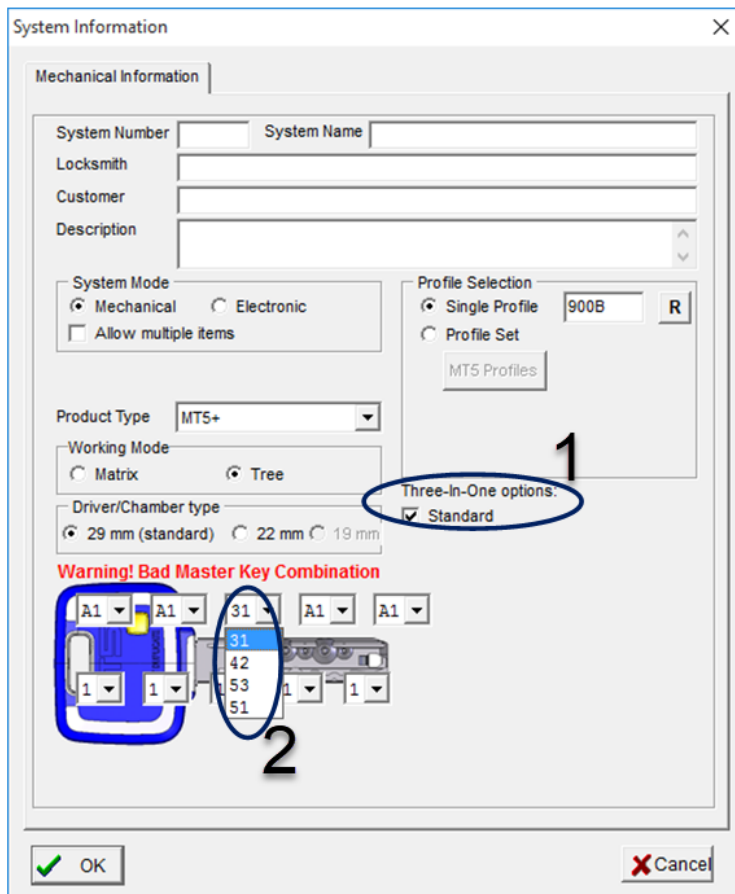




2. MT5 and MT5+ platform are now available with 3 in 1 option.

How to do it:

1. Check the 3 in 1 system box
2. Define the 3 in 1 pin which will be use in the system:
  - 31 – Change the combination from C3 to A1 – the 2 in 1 pin P/N is - 83301234
  - 42 – Change the combination from D4 to B2 – the 2 in 1 pin P/N is - 83301235
  - 53 – Change the combination from D5 to C3 – the 2 in 1 pin P/N is - 83301236
  - 51 – Change the combination from D5 to C3 to A1 – the 3 in 1 pin P/N is – 83301310





**Please Note:**

The 3 in 1 option is available in the 3<sup>rd</sup> chamber only .  
 In this chamber you should assemble a special 3 in 1 body pin .

1. 3 in 1 body pin for 29 cylinder – P/N 83300011
2. 3 in 1 body pin for 22 cylinder – P/N 83301327

At the MasterPiece print you will see in this chamber the letters CH:

```

Cylinder: GM
NR NR CH NR NR
-----
A1 A2 * 1 B3 A1 13131
      * 3
      * 5
    
```

3. Optimization of the calculation algorithm for apartments systems.

**But wait... there's more!**

With MasterPiece 5.19, your master key system is also free of some common bugs associated with the previous version.

1. In Multi-item systems:

1. Quantities issues in Classic Pro systems.
2. Key cutting machine files.
3. Classic Pro profiles.

2. Side pin cuts optimization on keys that open entrance door only.

MasterPiece 5.19, the next generation of Mul-T-Lock's MasterPiece, is waiting for you.

**To download the new version, please send an e-mail to Eyal:**

[Eyal.Morsky@mul-t-lock.com](mailto:Eyal.Morsky@mul-t-lock.com)

Please note that in order to have the new version, an annual license fee is required.

Welcome to

