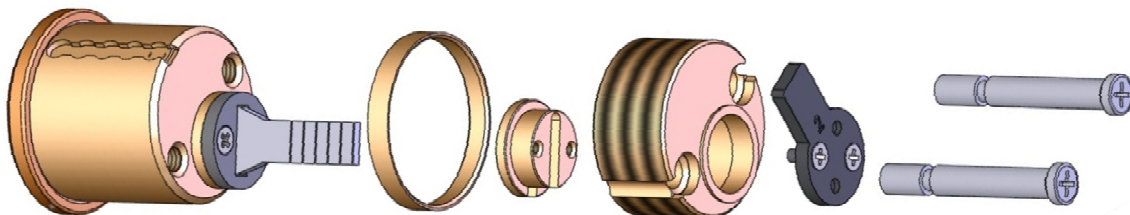


No. 262

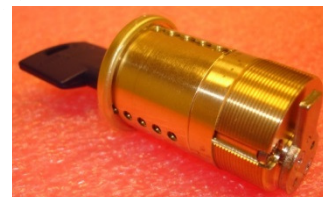
Date: 19.06.2014

NEW! Modular Mortise cylinder

We are happy to introduce to the markets a new Modular Mortise cylinder (this is an English Screw in Cylinder) that will enable you to build a long Mortise cylinder.



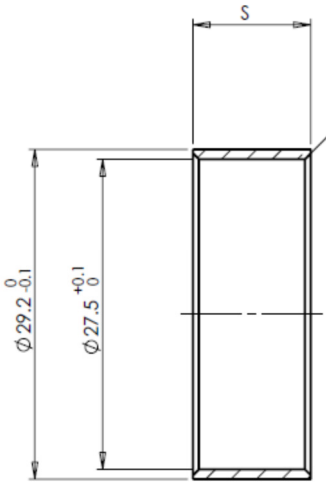
This concept is based on using a standard **RIM cylinder** together with additional parts which gives you a **MORTISE** cylinder of **1 5/8"** and longer.



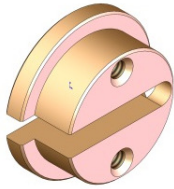
The tail for the **RIM cylinder** must be a flat one to assure that the cam will point up (to 12 o'clock...).

The body extension is a "one for all" and the screws are standard M5 with a modified head, the body spacer has to be selected according to the desired length (see table on next page).

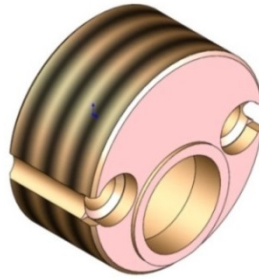




Length of Mortise to achieve:	S mm	P/N	Tail length mm	Screw length mm
1 5/8"	-	-	15	36
1 3/4"	4	85000263	17.5	36
2"	10.4	85000264	22.5	36
2 1/4"	16.8	85000265	30	47
2 3/8"	20	85000266	32.5	47
2 1/2"	23.2	85000267	35	47
2 3/4"	29.6	85000268	42.5	61*
3"	36	85000269	50	72*
3 1/2"	48.8	85000270	60**	72*



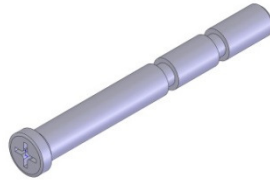
Plug adaptor
P/N: 85000261



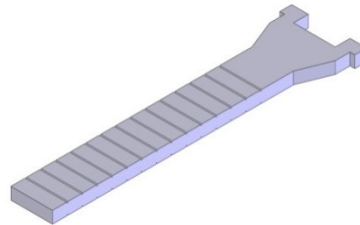
Body extension
P/N: 85000262



Body spacer
P/N: see table



Special M5 screws
P/N: 85000275



Flat tail
P/N: 87800012

NOTE: For the length of tail and screws needed, see table.
*Order screw P/N 86000027 (with modified head).
**Order tail P/N 86000016 (flat, without twisting).

As we do not plan on creating any "kit" for this product, please just place orders for the parts you need so you will be able to achieve all lengths you may need as per your order history and your knowledge of your market.



Mul-T-Lock Technologies Ltd., Technical Support Department
Tel: 972-8-9424318 | Fax: 972-8-9424418 | tech.support@mul-t-lock.com