

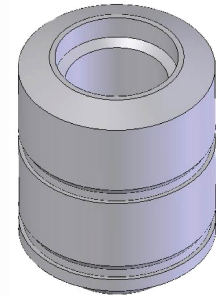


**MUL-T-LOCK®**

ON LINE UPDATE

**Tech. Update**

No. 244  
Date: 18.03.2012



## New external plug pin G

With the launch of the new Interactive+ products, a new external plug pin has now been introduced and also added to the pinning kit.

**This new pin must be assembled in the Interactive chamber in Interactive+ G type only.**

**Note:** There is no change for the Interactive+ S or B types.

**For example:** The combination in the Interactive chamber for the current Interactive G is A0 - external plug pin A and internal plug pin 0. For the Interactive+ G type the combination in the Interactive chamber will be G0 – external plug pin G (new) and internal plug pin 0.

The new pin has a special internal step (larger diameter) to fit the Interactive+ G type and identified by 2 grooves around the circumference of the pin.

The next release of the Masterpiece software will also support this new plug pin.

New plug pin G part number – 82011019.

