

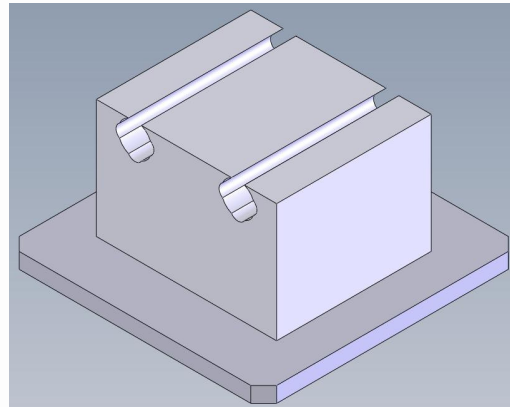


No. 231
Date: 08.07.2010

Servicing the MT5+

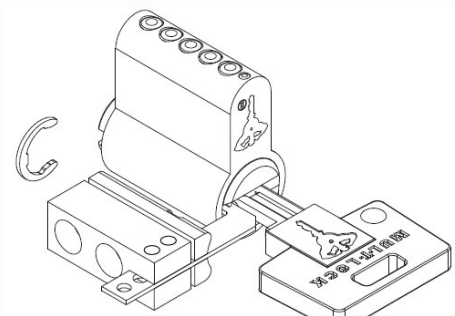
With MT5+ taking a bigger volume in our activity – some new tools are available to help ease the job for all of us.

1. Plastic sleeve: the MT5+ plug holds more than a regular plug (i.e finger pins , locking bar & springs in edition to the telescopic pins), the first challenge is keeping the spring loaded locking bar in place while pinning the chambers
To help you do this when “on the road” we offer this plastic sleeve that can be ordered using p/n **91487001**



2. Assembly block: For your work bench we can offer this assembly block. it can be ordered using p/n **90301420**

3. Set of 16 assembly keys: Any time a plug of a product having a locking bar is being driven into the cylinder housing – a key needs to be used (it is the same with all brands sharing this feature...) when assembling any KD product it is quit simple. When dealing with a double sided profile cylinder – the challenge seems to be slightly bigger – to make it easier we have made a set of 16 filed keys to enable the use of the cylinder catch – like we always did with all other platforms. The instruction manual for use of this tool is on next page.
We have made this set available for orders, based on the specific proprietary keyway used, in the other two position cuts will be: 11,12,13,14; 21,22,23,24; 31,32,33,34; 41,42,43,44...



4. Same concept can also be used on single sided product Including all Rim, Mortise and others... a set of regular keys can be prepared locally – you may want to take advantage of the double sided key feature – and reduce it down to 8 keys only.



MUL-T-LOCK®

General:

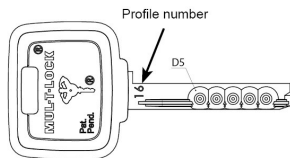
This method is designed to help in the assembly process of MT5+ double sided cylinders.

Pack content

- 16 filed key blanks
- Plug holder

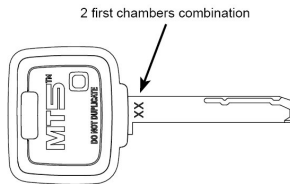
One side of the key:

Marking of the profile number
D5 combination on all 5 chambers



Second side of the key:

Marking of the locking bar
combination for the 2 first
chambers.
Locking bar combination cut.



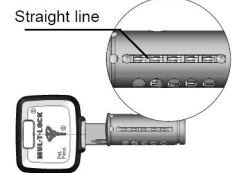
Assembly stages:

1. Assemble plug pins to the 2 plugs:

a. Insert finger pins according to combination printed.



b. Insert the plug into the plug holder. Insert set key and verify that a straight line is obtained on the finger pins.



c. Assemble 2 locking bar springs and insert locking bar into place. Rotate plug inside the plug holder (180° deg).



d. Assemble telescopic pins according to combination printed. Assemble eccentric pin in chamber 6.



2. Hold one plug with the set key, locking bar direction towards driver pins. Insert the plug all the way into cylinder body (while pushing the follower out). Rotate plug until locking (180° deg). Pull the key carefully out while holding the plug in place.

Note: do not rotate plug if it is not inserted all the way in.

3. Assemble spring catcher on other side and take follower out.

4. Pull out the set key from the other plug and insert the matching filed key. The combination of the 2 first chambers is printed on the key.

5. Hold plug and with the filed key Insert it into cylinder body all the way into cylinder body. Rotate plug (with spring catcher) until locking. Pull filed key and spring catcher carefully while holding the plug in place.

6. Proceed with regular assembly process according to cylinder type.