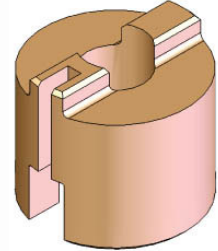


No. 228  
Date: 04.07.2010



## Plug adaptor modification

Recently we have done some modifications to the plug adaptors in order to improve the function with emergency cam/cogwheel cylinders when using plug adaptors.

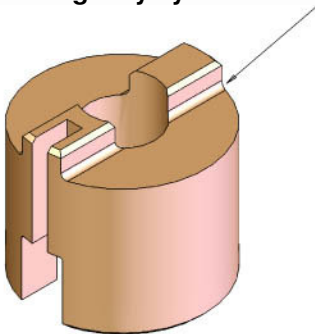
We have noticed that a gap was created between the plug and the adaptor due to the radius (See illustration). As a result the key stopping point in emergency systems moves from its original position causing function difficulties.

You can still continue and use the previous version of plug adaptors for other profile cylinders when the cylinder is not assembled with emergency function.

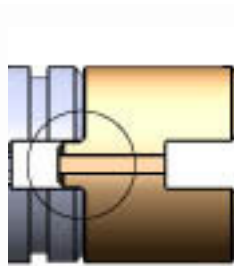
For cylinders with emergency function please use the modified plug adaptors with the small radius.

We are now supplying plug adaptors with the small radius only.

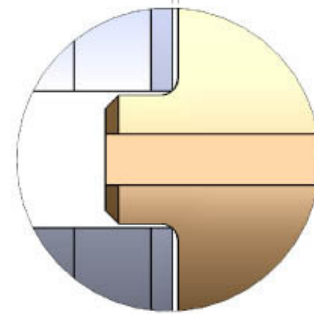
**Large radius – not for use with emergency systems**



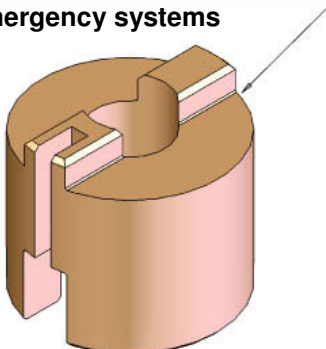
**Previous version**



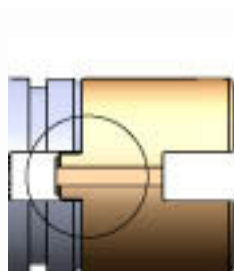
**Gap**



**Small radius – for use with emergency systems**



**Current version**



**No Gap**

