



MUL-T-LOCK®

ON LINE UPDATE

Tech. Update

No. 226

Date: 10.06.10



Follower use – Please your attention!

Back in 2005 we added a notch to our plastic follower – to make sure that it is locked in place during transportation.

We did this because we found that when we shipped loaded bodies, sometimes the follower would fall off... At the time, we notified you regarding this change in our "On line Update" No.177 of September 2005.

MUL-T-LOCK®

NO.177
DATE: 21.9.05

Follower - on the go!

With the growing volume of "subassemblies" (loaded body) being shipped to our customers, we have encountered numerous situations in which due to aggressive handling of packages by couriers the standard follower moved out from its place – causing the pins and springs to "fly out"...

To resolve this situation, we have now introduced a plastic follower with a "notch". This notch will catch the driver (body pin) and will prevent it from falling out – even if the box is dropped or in any other way abused.

When you do need to drive the follower out, simply turn it 180 degrees, to the point in which the longitudinal groove is facing the body pin – at this time the new groove is turned away from the pin and the follower can be easily pushed out.

“Longitudinal groove” “Notch”

Mul-T-Lock Technologies Ltd. Technical Support Unit
Mul-T-Lock Park, Yavne Israel
Tel: 972-8-9424678 Fax: 972-8-9424418
e-mail:rami_a@mul-t-lock.com



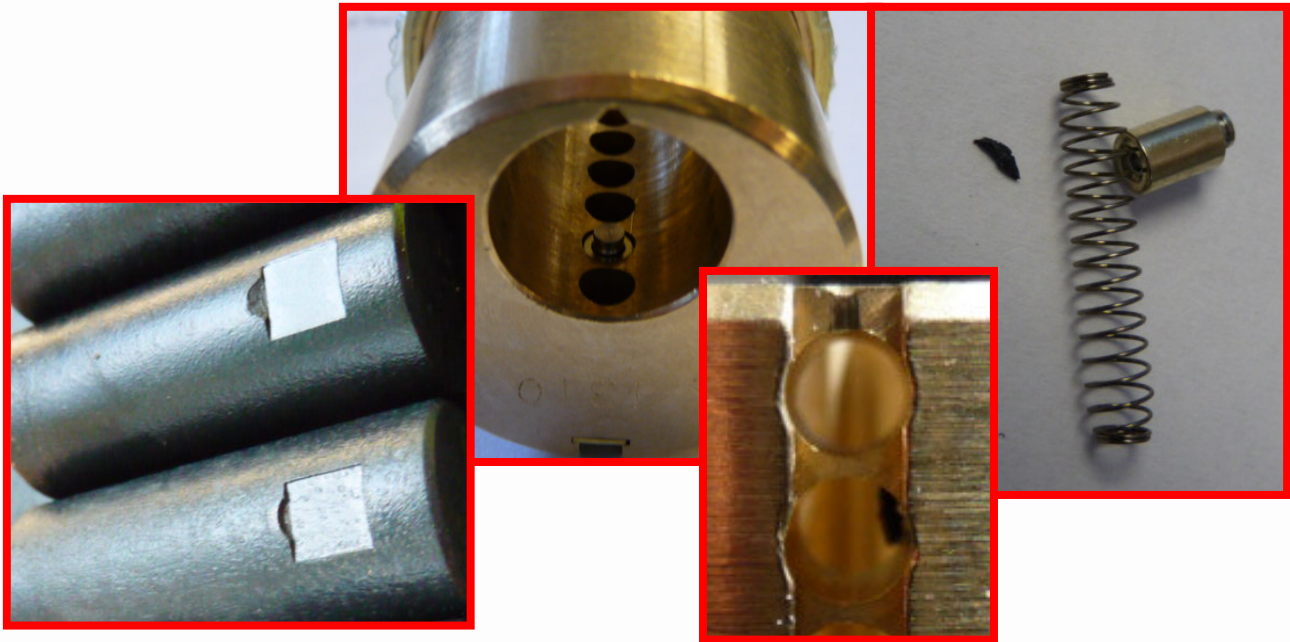


MUL-T-LOCK®

ON LINE UPDATE

Tech. Update

This follower does the job well. Since that time we have had no similar complaints. However, recently we encountered a situation in which someone may have “pushed hard” on the follower in its “locked position”, causing a small plastic chip to break off... This chip made its way right into the driver pin chamber and got wedged inside, preventing the pin from moving. See the following pictures:



Following this incident, we would like to emphasize: it is highly important to make sure that the “locked follower” is unlocked before pushing it out, as shown in the following pictures:



**Turn the
follower right
side up.**



When the follower groove is facing the drivers it is OK to push it out...

When the follower groove is facing away from the drivers – the notch is locked. Do not attempt to push it out. Turn it around first!!!