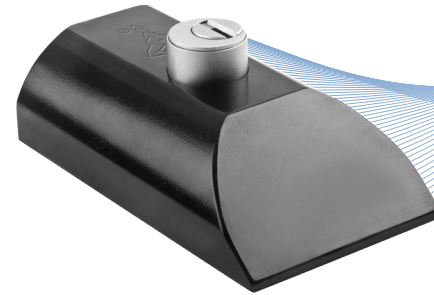


## Operation Manual

1. Open the door and take the key out of the lock.
2. Shut the door.
3. Slide the lock from the open to closed position until it stops.
4. To lock, push the cylinder inside until it stops. Make sure the lock cannot slide back.
5. To open, insert the key. Turn it 90° clockwise and pull the cylinder out.
6. Remove the key from the cylinder.
7. Slide the lock fully to open the position
8. Push the cylinder inside to fix the position of the lock.
9. You can now open the door.
10. For long-time proper functionality, make sure that the lock and its parts are as clean as possible.



# MVP™ 1000



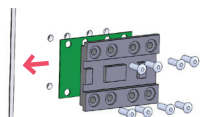
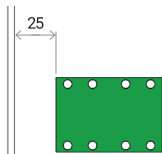
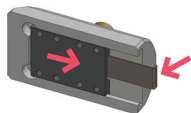
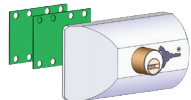
[www.mul-t-lock.com](http://www.mul-t-lock.com)

The Mul-T-Lock name, the muscleman logo, in the field of locking products, and the MTL name and/or any other trademark, marked by a ™ or ® sign, are registered / pending or otherwise owned trademarks of Mul-T-Lock Ltd. and/or its affiliates 2023. 22105043 A

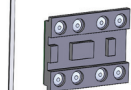
Part of ASSA ABLOY



# INSTALLATION INSTRUCTIONS



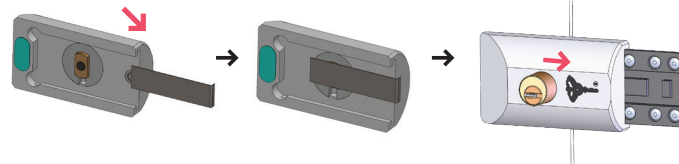
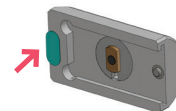
LOCKING DIRECTION



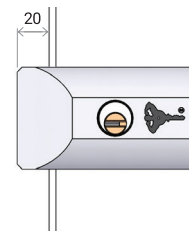
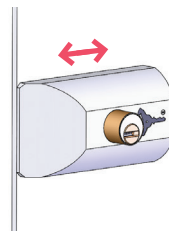
1. Before installation, place the lock at the chosen area on the vehicle together with 1 plastic seal. Check if additional plastic seal is needed (if the installation area is lower than the door which you intend to block).
2. Insert the key, turn the cylinder and pull it out to un-locked position.
3. Use the special tool to press the spring loaded stopper pin and remove the base from the lock body.
4. Choose the required position on the vehicle – determine the right height and make sure there is no obstacle inside (electrical or mechanical cables, mechanism etc.). For the side door, make sure the lock or the cylinder are not touching any inside trim when opening the door completely.
5. Position the plastic seal 25mm from the nearest edge.
6. Mark one of the holes and drill  $\varnothing 5\text{mm}$  through the marking.
7. Attach the base + plastic seal(s) with one rivet. **Pay attention to the right direction of the base!! This is shown on the sticker which you need to remove before drilling.**
8. Make sure the base is horizontal and drill the remaining 7 holes  $\varnothing 5\text{mm}$  through the holes of the base.
9. Mount the base using the remaining 7 rivets.

10. Apply the sticker on the lock body (to prevent scratching of the vehicle door).

11. Use the special tool to press the pin and slide the lock over the base.



12. Remove the tool and slide the lock to locking position. Make sure the door cannot be opened.



13. Slide the lock to open position and make sure that the door can easily be opened.
14. Make sure the cylinder is locked (without key) at both lock's positions.
15. Insure smooth lock movement over the base in both directions.