

## Installation by welding

### Preparation

1. Hasps should be welded onto two flat surfaces of equal height
2. If surfaces are not flushed, add spacers to adjust the surface levels
3. Hasps should be placed so they do not interfere with door operation or passage through doorway
4. Clean welding area from paint, dirt, grease etc.

### Installation

1. Fit a padlock of suitable size into the Hasps, so that both Hasps parts are held together.
2. Place the Hasps on the installation surface and separate the two parts (with the padlock inside), allowing a gap of 3 mm ( $\frac{1}{8}$ " ) between Hasps parts
3. Use stainless steel electrodes to attach the Hasp parts to the surface temporarily, at a few welding points
4. Remove the padlock. Make sure that the door is operating freely. If needed, remove Hasp parts and repeat steps 2 and 3
5. When the door opens and closes freely, and the padlock can be easily inserted and removed, complete full welding around Hasp parts. If steel spacers are used, weld Hasp and spacers together to the door
6. Paint the welded parts with proper rust resistance paint

### **Note:**

When door surface and frame are not flushed, use metal spacers.



## Hasps No. 10, 13, 16 Installation Instructions



The Mul-T-lock name and Muscleman Logo, and any other name, mark or logo used by Mul-T-Lock and marked by an ® or ™ sign, are registered/pending trademarks of Mul-T-Lock Ltd. in various countries. Mul-T-Lock reserves the right to make any product improvements or modifications without prior notice.

© 2008 Mul-T-Lock Technologies Ltd. Cat. No. 28200190-B

An ASSA ABLOY Group brand

**ASSA ABLOY**

[www.mul-t-lock.com](http://www.mul-t-lock.com)

## Installation by screws

### Option 1 - fig 1

1. Choose desired location for installing. Hold the two parts in place, and mark their outlines on the surface
2. Place the template on the marked outlines and mark 4 hole positions
3. Drill holes, according to diameter shown on the template
4. Insert screws in the profile holes on the back of Hasp part "B". Put part "B" in its place, and tighten the nuts partially
5. Check for smooth operation, as well as easy insertion and removal of the padlock
6. Secure nuts tightly
7. Saw the screws so they extend about 3 mm ( $\frac{1}{8}$ " ) from the nut
8. Weld or rivet the screw tip to the nut, to prevent unauthorized disassembly

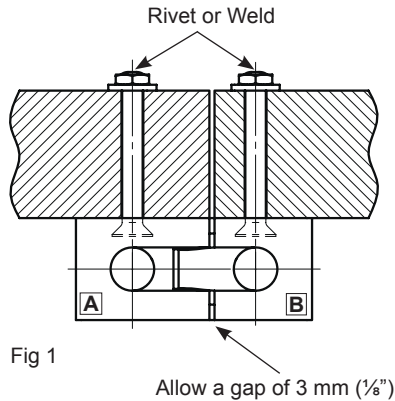


Fig 1

### Option 2 - fig 2,3

1. Choose desired location for installation. Hold part "B" in place
2. Mark 2 hole positions through the Hasp
3. The required hole diameter is based on the following table

	Hasp 10	Hasp 13	Hasp 16
Wooden frame	5mm	7mm	8.5mm
Metal frame	8mm	10mm	12mm

4. Hold part "A" in place and mark the outlines on the surface
5. Place template on the marked place and mark 2 hole positions
6. Drill holes according to diameter shown on template
7. Insert screws in the profile holes on the back of part "A". Put part "A" in its place and tighten the nuts partially
8. Check for smooth operation, as well as easy insertion and removal of the padlock
9. Secure the nuts tightly
10. Saw the screws so they extend about 3 mm ( $\frac{1}{8}$ " ) from the nut
11. Weld or rivet screw tip to the nut to prevent unauthorized disassembly

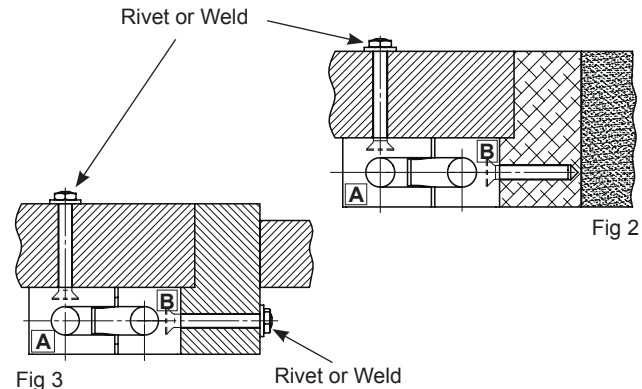


Fig 3

Fig 2