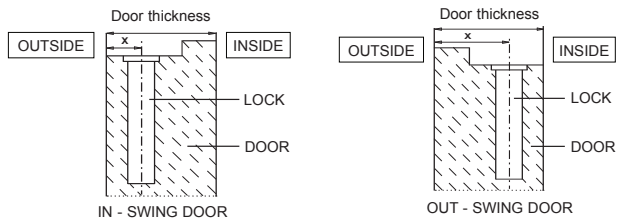


Door thickness	X	Cylinder Length	Threaded Rod (14)	Moving Handle spindle (10)	Fixed Handle spindle (17)	Screw for Cyl. Protector	Spacer 10 mm	Spacer 1.5 mm (12)
45	15-19	76-33/43	M6X50	135	120	M8X35	0	3
45	20-25	75-35/40	M6X50	135	120	M8X35	0	5
45	26-30	76-33/43	M6X50	135	120	M8X45	1	4
50	17-23	76-33/43	M6X60	135	120	M8X35	0	3
50	24-26	80-40/40	M6X60	135	120	M8X45	0	7
50	27-32	76-33/43	M6X60	135	120	M8X45	1	4
55	17-23	81-33/48	M6X60	135	130	M8X35	0	3
55	24-31	86-43/43	M6X60	135	130	M8X45	1	3
55	32-38	81-33/48	M6X60	135	130	M8X50	1	6
60	17-22	86-33/53	M6X65	140	130	M8X35	0	3
60	23-26	86-38/48	M6X65	140	130	M8X45	0	7
60	27-33	90-45/45	M6X65	140	130	M8X50	1	4
60	34-37	86-38/48	M6X65	140	130	M8X50	1	7
60	38-43	86-33/53	M6X65	140	130	M8X60	2	4
65	17-22	91-33/58	M6X70	150	140	M8X35	0	3
65	23-26	96-38/58	M6X70	150	140	M8X45	0	6
65	27-30	96-43/53	M6X70	150	140	M8X45	1	2
65	30-35	96-48/48	M6X70	150	140	M8X50	1	6
65	35-38	96-43/53	M6X70	150	140	M8X60	2	2
65	39-42	96-38/58	M6X70	150	140	M8X60	2	5
65	43-48	91-33/58	M6X70	150	140	M8X70	3	3
70	17-22	101-33/68	M6X75	150	140	M8X35	0	3
70	23-27	105-40/65	M6X75	150	140	M8X50	0	9
70	28-31	105-45/60	M6X75	150	140	M8X50	1	4
70	32-38	106-53/53	M6X75	150	140	M8X60	2	3
70	39-42	105-45/60	M6X75	150	140	M8X60	2	6
70	43-47	105-40/65	M6X75	150	140	M8X70	3	4
70	48-53	101-33/68	M6X75	150	140	M8X70	3	6

* All measurements are in millimeters



SH300 Hardware

Installation Instructions



The Mul-T-Lock name and muscleman logo, and any other name, mark or logo used by Mul-T-Lock and marked by ® or ™ sign, are registered/pending trademarks of Mul-T-Lock Ltd. in various countries. Mul-T-Lock reserves the right to make any product improvements or modifications without prior notice.

© 2012 Mul-T-Lock Technologies Ltd. Cat. No. 26510282-F

An ASSA ABLOY Group brand

ASSA ABLOY

www.mul-t-lock.com

General:

The SH-300 hardware kit contains a set of parts (i.e. screws, threaded rods, spacers etc.) suitable for door thicknesses of 50 and 55 mm. Depending on the installation and door thickness (50 or 55 mm), some parts will be redundant.

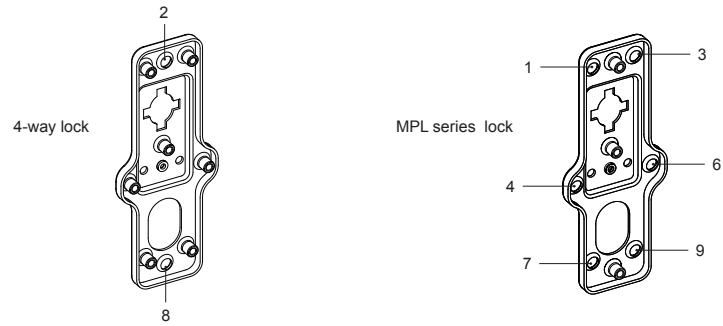
See table on the back cover of this manual for exact parts needed for each door thickness.

Additional parts suitable for different door thickness may be ordered upon request.

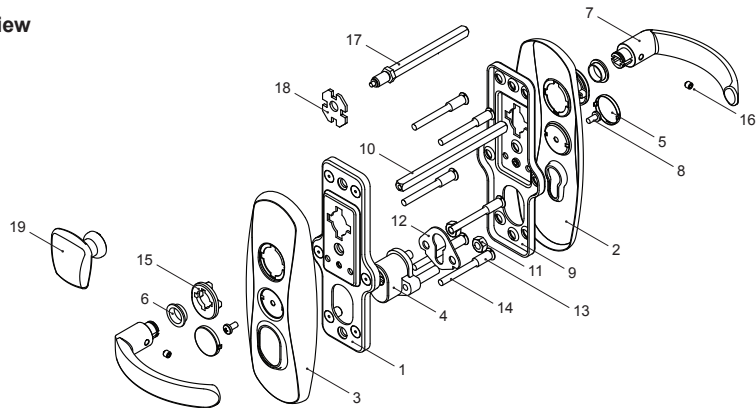
Note: The cylinder protector contains 2 ball bearings hidden behind the threaded rods; do not forget to reinsert them when changing the rod length.

The hardware kit is suitable for 4-way locks and for the MPL210 lock series. The external metal base is supplied with all 9 steel bushings.

- For 4-way lock installation remove 2 steel bushings numbers 2 and 8.
- For MPL210 lock series installation remove 6 steel bushings - numbers 1, 3, 4, 6, 7, 9.



Exploded view



Part	Description	Part	Description	Part	Description
1	External base	8	Screw M5x10	15	Variation insert
2	Internal cover	9	Internal base	16	Intruding screw
3	External cover	10	Moving handle spindle	17	Fixed handle spindle
4	Cylinder protector	11	Nut M8	18	Counter disc
5	Medal	12	Spacer for cylinder protector	19	Fixed handle
6	Handle insert	13	Internal nut		
7	Handle	14	Threaded rod		

8. Assemble internal handle insert. Assemble internal handle and tighten the Intruding screw (M6x8) to fix handle to handle spindle.

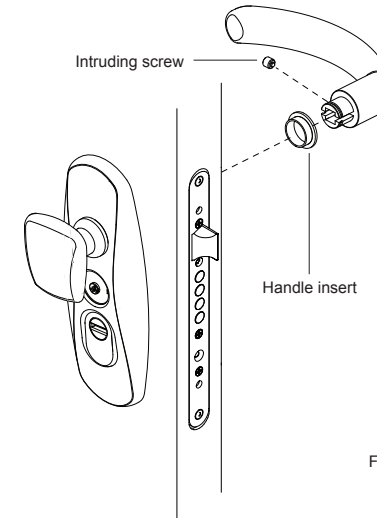


Fig.32

9. Snap on 2 cover medals from both sides of the door.

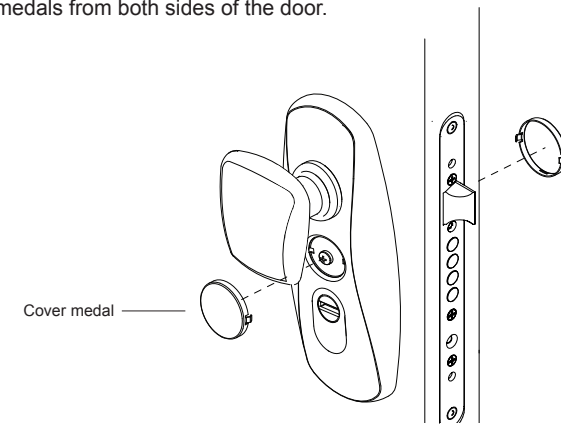
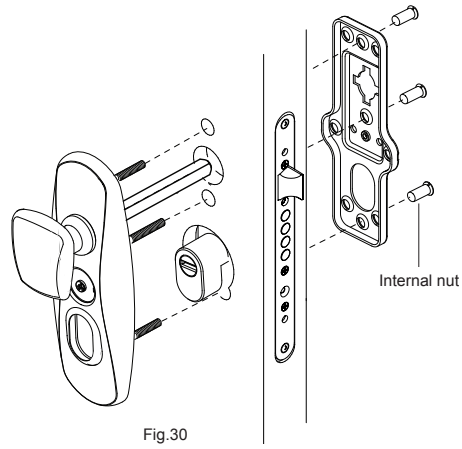
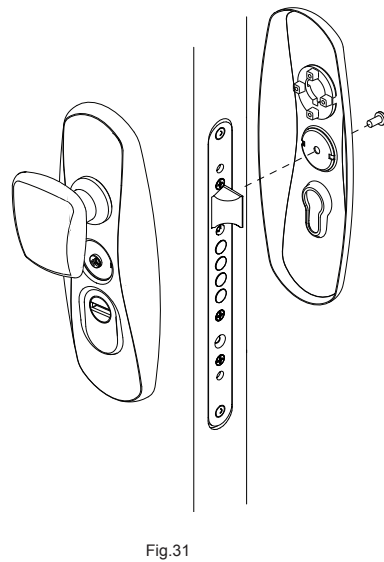


Fig.33

- Fix external and internal hardware plates onto the door. Tighten the 3 internal nuts.



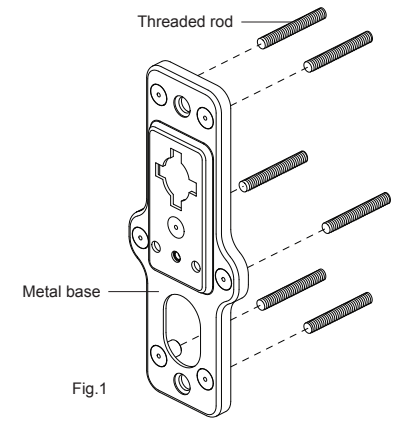
- Fix internal cover onto metal base plate and tighten the screw.



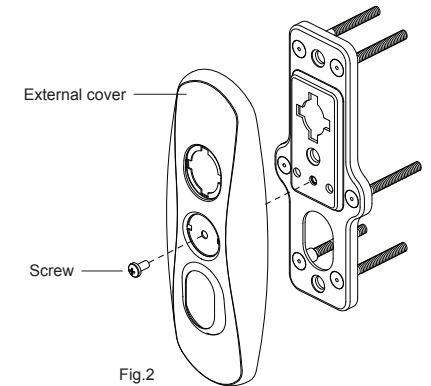
Moving handle assembly - 4-way lock type

- Screw 6 threaded rods into external metal base.

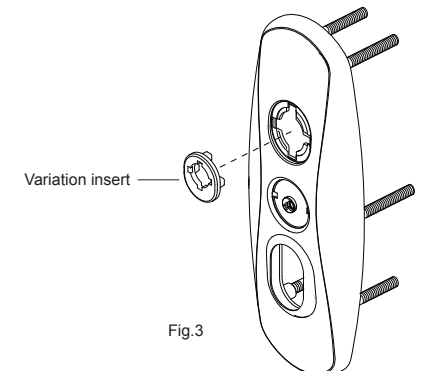
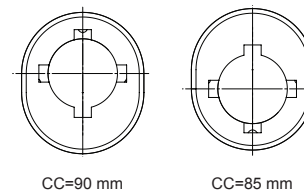
Note: the length of the threaded rods is determined according to door thickness. In some modified doors only one threaded rod should be used, at the upper central hole.



- Fix external cover onto metal base plate and tighten the screw.



- Assemble variation insert according to door CC (center to center) measurement: 85 or 90 mm.



4. Assemble external spacer (if required) and cylinder protector. Assemble internal spacer. Tighten the 2 nuts (M8). Assemble spindle for moving handle.

Note:

1. Spacer thickness and spindle length are determined according to door thickness.
2. Any time the stud bolt does not go all the way into the M8 nuts – remove both studs and flip them over (so that the solid end is facing out).

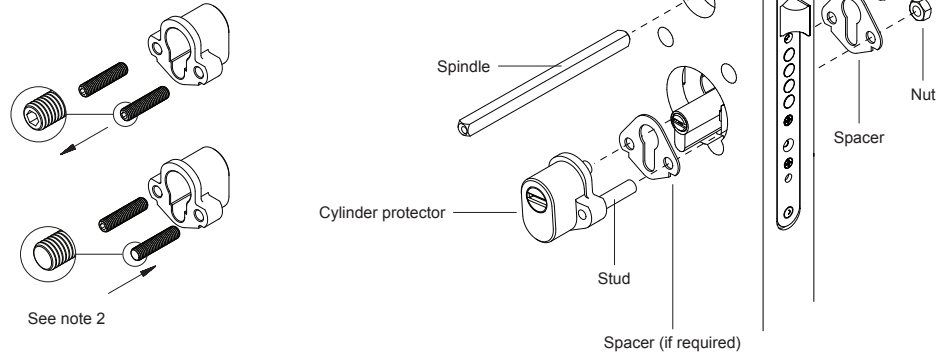


Fig.4

4. Attach fixed handle to external plate. Fix counter disc and screw spindle for fixed handle into the handle.

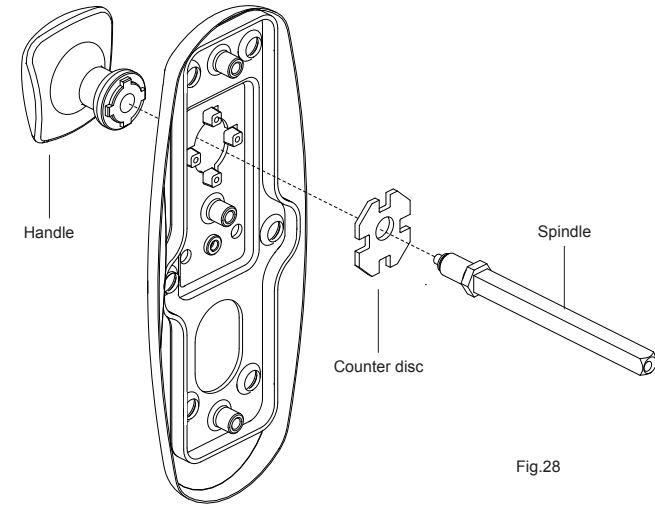


Fig.28

5. Fix external and internal hardware plates onto the door. Tighten the 6 internal nuts.

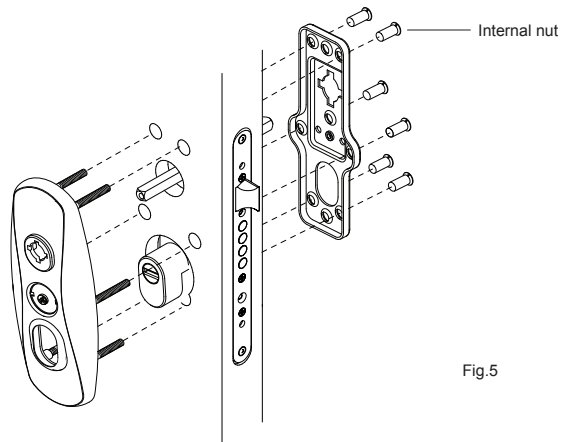


Fig.5

5. Fix spacer (if required) and cylinder protector onto the door. Tighten the 2 nuts (M8).

Note:

1. Spacer thickness and spindle length are determined according to door thickness.
2. Any time the stud bolt does not go all the way into the M8 nuts – remove both studs and flip them over (so that the solid end is facing out).

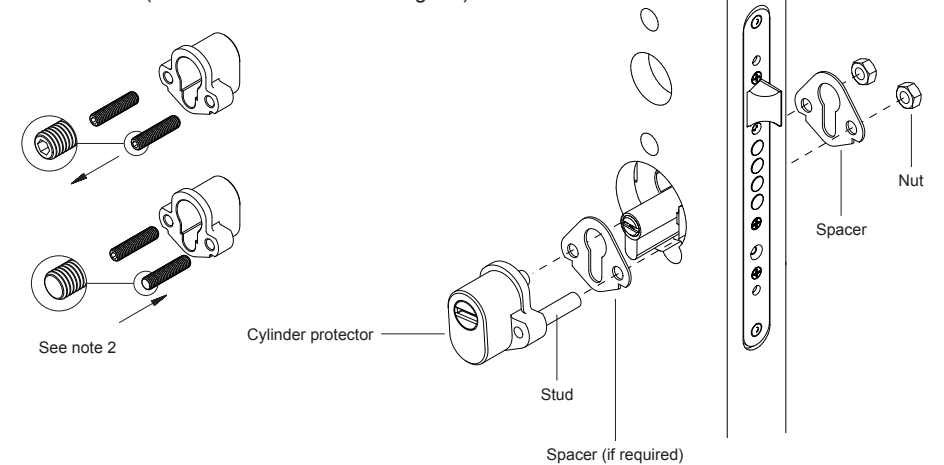


Fig.29

Fixed handle assembly - MPL210 lock type

1. Screw 3 threaded rods into external metal base.

Note: the length of the threaded rods is determined according to door thickness.

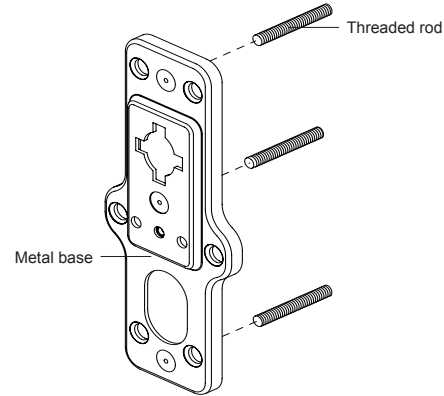


Fig.25

2. Fix external cover onto metal base plate and tighten one screw (Fig 26).

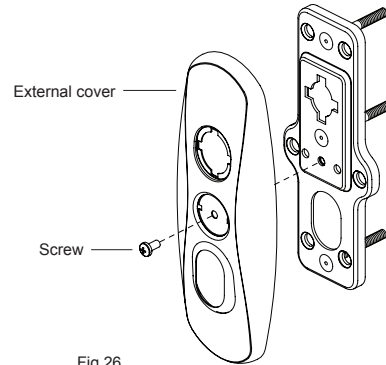
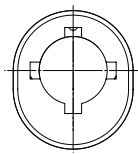
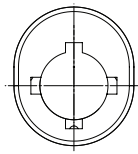


Fig.26

3. Assemble variation insert according to door CC (center to center) measurement: 85 or 90 mm.



CC=90 mm



CC=85 mm

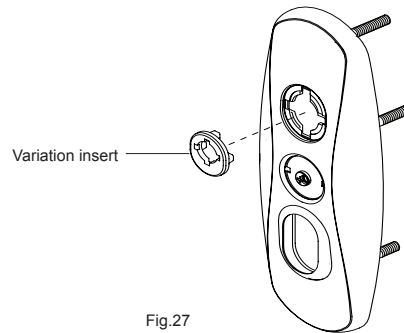


Fig.27

6. Fix internal cover onto metal base plate and tighten the screw (Fig 6).

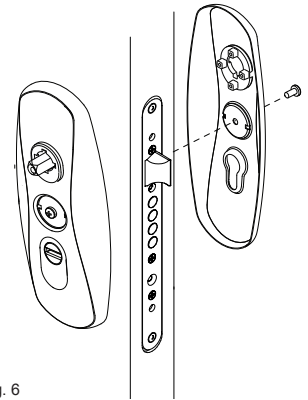


Fig. 6

7. Assemble handle inserts (external and internal).
8. Assemble external and internal handles (Fig 7).
Tighten the Intruding screws to fix handle to handle spindle (M6x8).

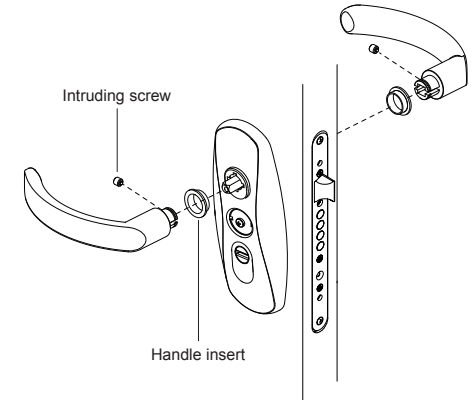


Fig 7

9. Snap the 2 cover medals onto both sides of the door.

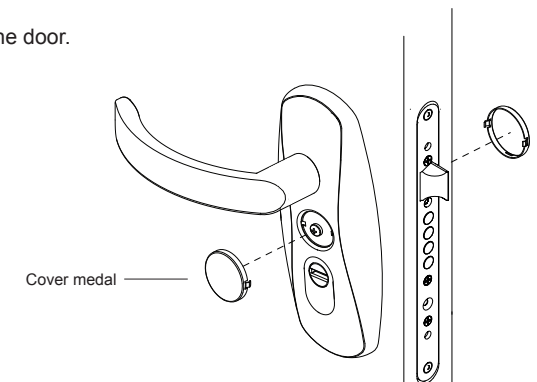


Fig.8

Fixed handle assembly - 4-way lock type

1. Screw 6 threaded rods into external metal base.

Note: the length of the threaded rods is determined according to door thickness. In some modified doors only one threaded rod should be used, at the upper central hole.

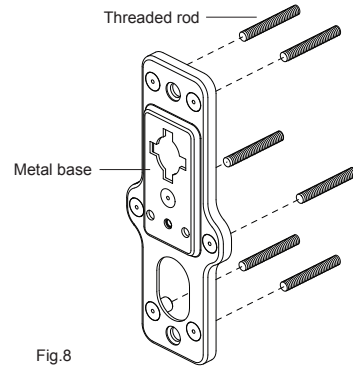


Fig.8

2. Fix external cover onto metal base plate and tighten the screw.

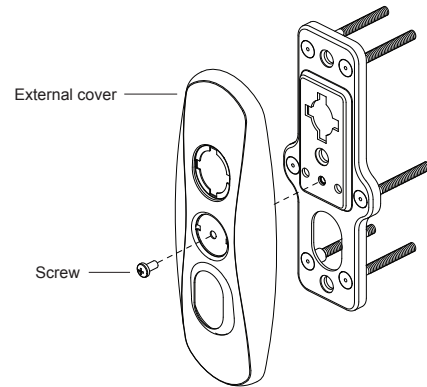


Fig.9

3. Assemble variation insert according to door CC (center to center) measurement: 85 or 90 mm.

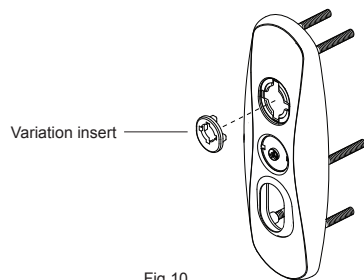
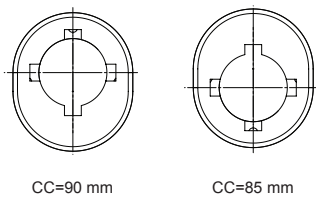


Fig.10

6. Fix external cover onto metal base plate and tighten the screw.

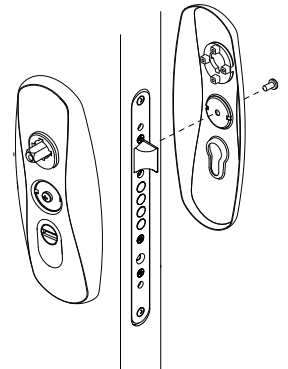


Fig.22

7. Assemble handle inserts (external and internal).

Assemble external and internal handles

(Fig 23). Tighten the Intruding screws to fix handle to handle spindle (M6x8)

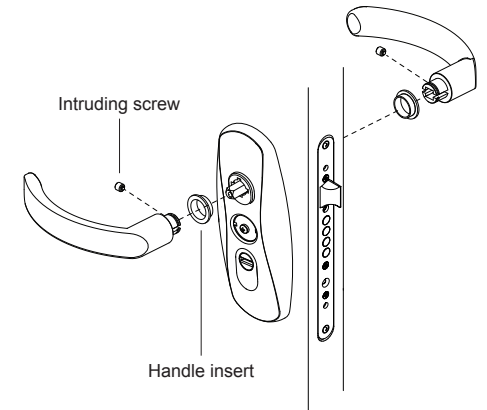


Fig.23

8. Snap 2 cover medals onto both sides of the door.

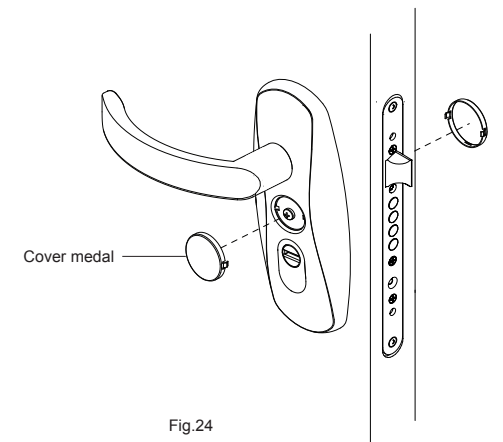


Fig.24

4. Assemble external spacer (if required) and cylinder protector. Assemble internal spacer. Tighten the 2 nuts (M8). Assemble spindle for moving handle.

Note:

1. Spacer thickness and spindle length are determined according to door thickness.
2. Any time the stud bolt does not go all the way into the M8 nuts – remove both studs and flip them over (so that the solid end is facing out).

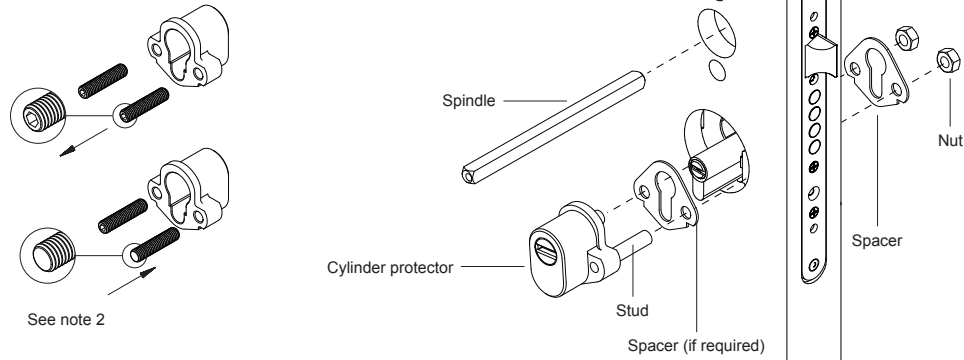


Fig.20

5. Fix external and internal hardware plates onto the door. Tighten the 3 internal nuts.

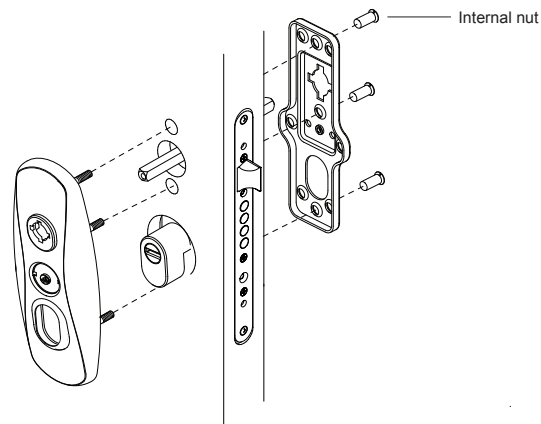


Fig.21

4. Attach fixed handle to the external plate. Fix counter disc and screw spindle for fixed handle into the fixed handle.

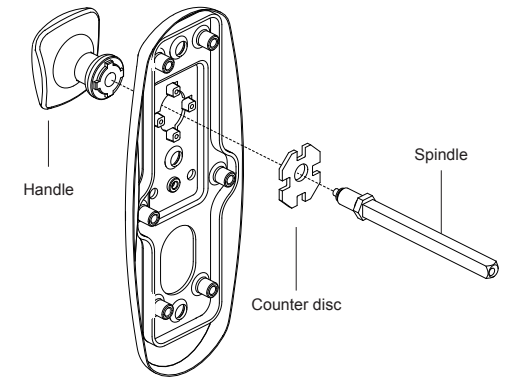


Fig.11

5. Assemble external spacer (if required) and cylinder protector. Assemble internal spacer. Tighten the 2 nuts (M8).

Note:

1. Spacer thickness and spindle length are determined according to door thickness.
2. Any time the stud bolt does not go all the way into the M8 nuts – remove both studs and flip them over (so that the solid end is facing out).

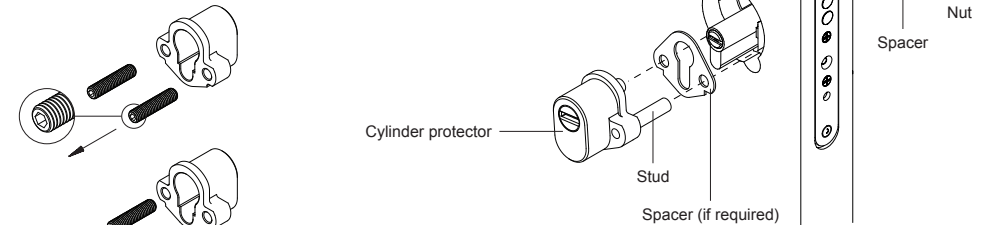


Fig.12

6. Fix external and internal hardware plates onto the door. Tighten the 6 internal nuts.

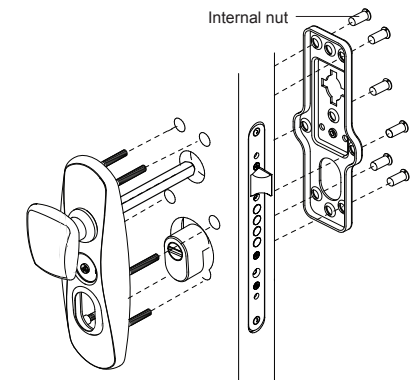
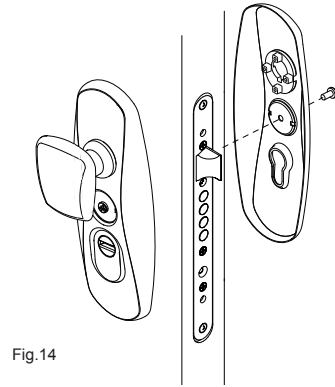
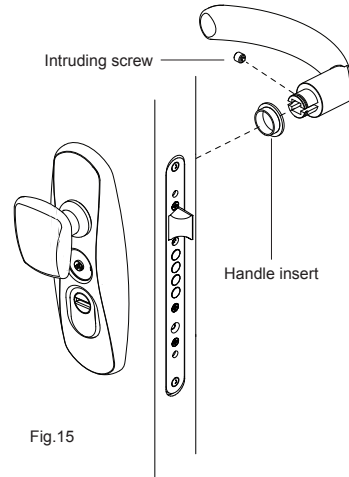


Fig.13

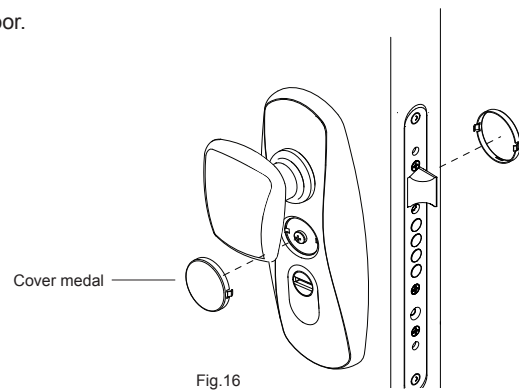
7. Fix internal cover onto metal base plate and tighten the screw.



8. Assemble internal handle insert. Assemble internal handle and tighten the Intruding screw (M6x8) to fix the handle to handle spindle (Fig 15).



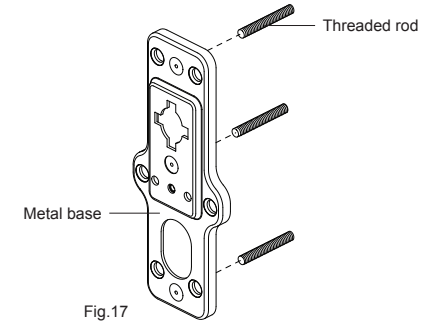
9. Snap 2 cover medals onto both sides of the door.



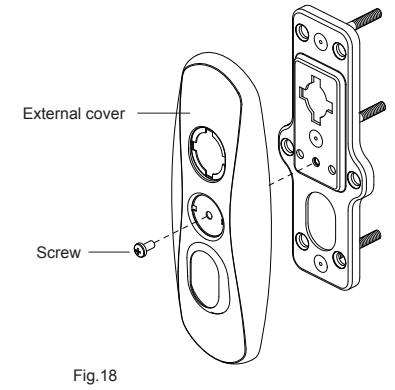
Moving handle assembly - MPL210 lock type

1. Screw 3 threaded rods into external metal base.

Note: The length of the threaded rods is determined according to door thickness.



2. Fix external cover onto metal base plate and tighten one screw.



3. Assemble variation insert according to door CC (center to center) measurement: 85 or 90 mm.

