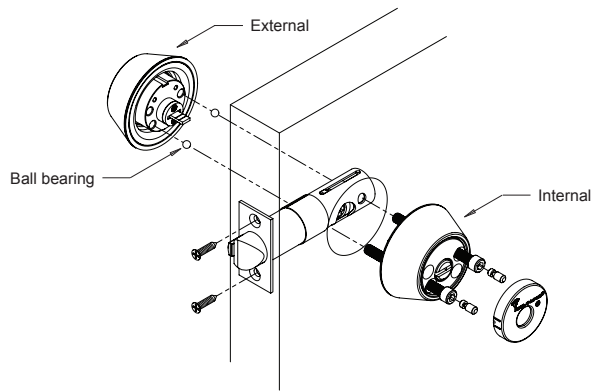


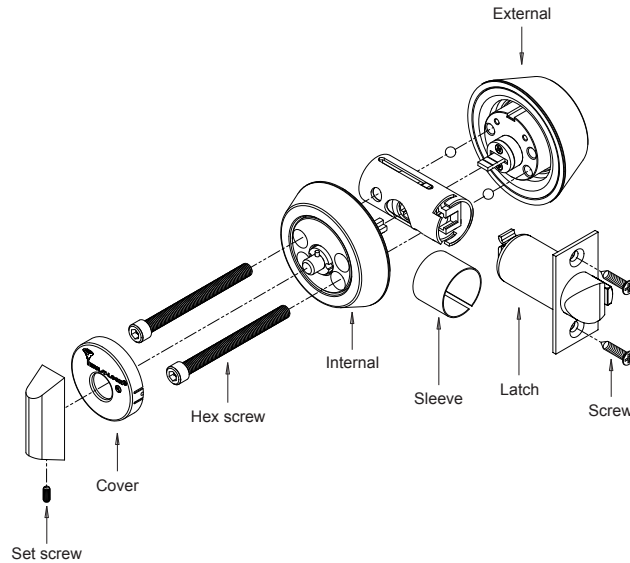
6. Double cylinder installation

- Remove cover plate on internal side assembly.
- Place 2 ball bearings inside the screw holes of the external body assembly.
- Insert the external body assembly into the door/gate making sure the tailpiece engages the latch mechanism properly and does not protrude more than halfway through the width of the latch mechanism.
- If the tailpieces (internal or external assemblies) are too long due to the thickness of the door/gate, they can be shortened by removing the assemblies and cutting the tailpieces to the right length.
- when tailpieces length is right, position internal assembly on the door/gate making sure that the tailpiece engages the bolt correctly.
- Insert 2 hex bolts and tighten.
- Check for proper operation of the latch.
- If the latch is not functioning the tailpieces are probably pressed against each other. Disassemble and adjust the length of the tailpieces for proper functioning.

Note: for installation on doors/gates with thickness of 1½" (38 mm), use a special internal and external rosette spacer.



General View



Gate Latch Lock

Installation Instructions



The Mul-T-lock name and muscleman logo, and any other name, mark or logo used by Mul-T-Lock and marked by an ® or ™ sign, are registered/pending trademarks of Mul-T-Lock Ltd. in various countries. Mul-T-Lock reserves the right to make any product improvements or modifications without prior notice. © 2009 Mul-T-Lock Technologies Ltd. Cat. No. 22900772-A

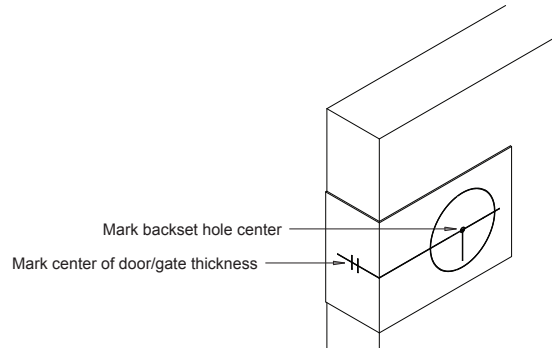
An ASSA ABLOY Group brand

ASSA ABLOY

www.mul-t-lock.com

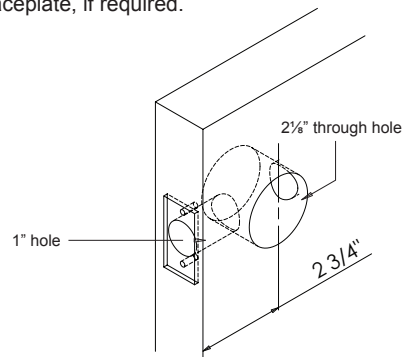
1. Mark drilling centers (use template)

- Position template at proper height on the door/gate.
- Mark center for 2 1/8" (54 mm) hole at 2 3/4" backset.
- Mark center of latch hole according to door/gate thickness.



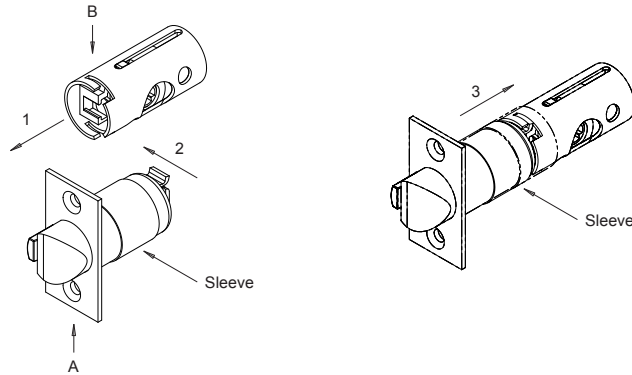
2. Drill holes

- Drill a 2 1/8" (54 mm) through hole on the face of the door/gate.
- Drill a 1" (25 mm) hole to a depth of 4" (101.6 mm).
- Make recess for bolt faceplate, if required.



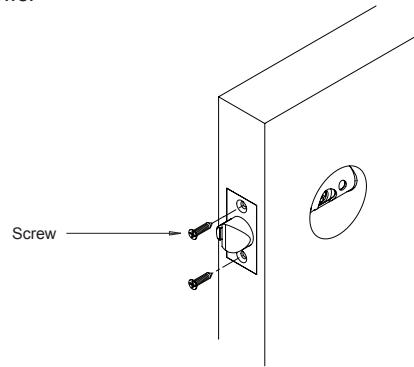
3. Latch assembly

1. Throw mechanism forward (B).
2. Engage latch (A).
3. Slide sleeve to cover connection area.



4. Install latch

- Install latch as shown in the diagram.
- Fasten 2 screws.



5. Single cylinder installation

- Loosen set screw and remove the thumbturn and the cover plate on thumbturn side.
- Place 2 ball bearings inside the screw holes of the external body assembly.
- Insert the external body assembly into the door/gate making sure the tailpiece engages the latch mechanism properly and does not protrude more than halfway through the width of the bolt mechanism.
- If the tailpieces (internal or external assemblies) are too long due to the thickness of the door/gate, they can be shortened by removing the assemblies and cutting the tailpieces to the right length.
- When tailpieces length is right, position internal assembly on the door/gate making sure that the tailpiece engages the latch mechanism correctly.
- Insert 2 hex screws and tighten.
- Check for proper operation of the latch.

